

Three piece ball valve features

- Thread, socket weld and butt weld is optional
- Adopting circular arrow mark, the pointer can indicate valve position accurately
- Easy disassembly and convenient maintenance
- Compact size suits for small equipment

Applications

- Industrial control equipment, instrumentation products
- Environmental protection, water supply and drainage, water treatment engineering

Certification: CE, ISO9001, MA, AL

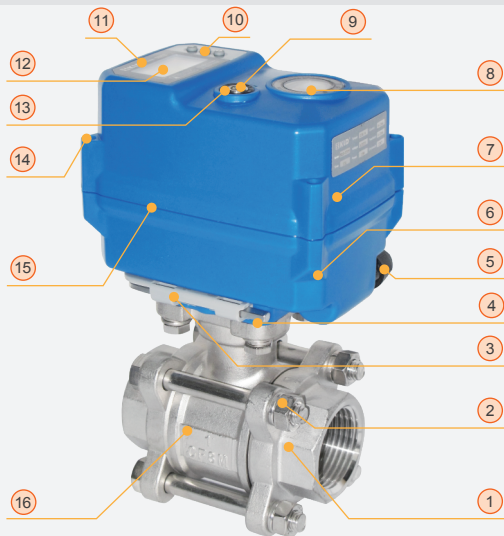


200N normal on/off model



500N normal on/off model

200C Smart Three Piece Ball Valve Main Components Diagram

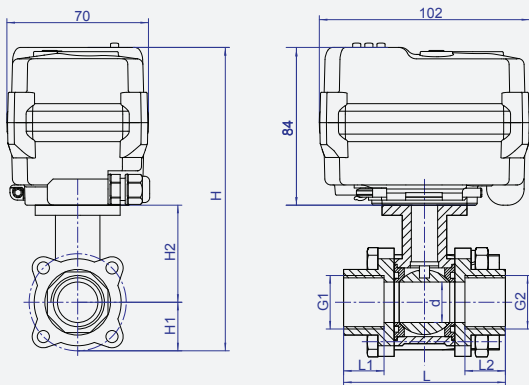


Main Components

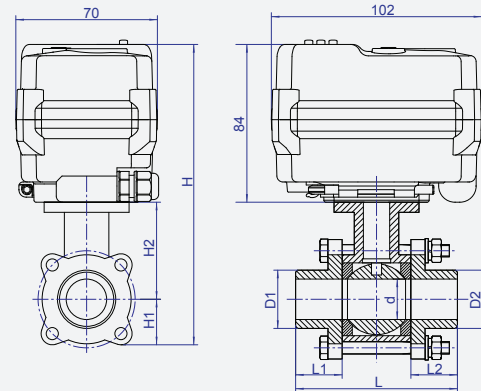
No.	Parts	Material	Qty
1	Valve bonnet	304/316	2
2	Bolt	304	4
3	Wrench fixed	Heatproof ABS	1
4	Hexagon wrench	Tool steel	1
5	Cable connector	Nylon/Nickel-plated brass	1
6	Bottom cover	Heatproof ABS/Casting aluminum	1
7	Top cover	Heatproof ABS/Casting aluminum	1
8	Indicator	Transparent AS	1
9	Manual shaft	304	1
10	Key	Rubber	3
11	Label	PVC	1
12	Screen	OLED	1
13	Oil seal	NBR	1
14	Screws	304	4
15	Lid seal	SI	1
16	Valve body	304/316	1

Normal on/off model no key and 1.3-inch OLED screen.

Dimension 【200C, DN8-DN25, Thread/Socket weld】



Dimension 【200C, DN8-DN25, Butt weld】

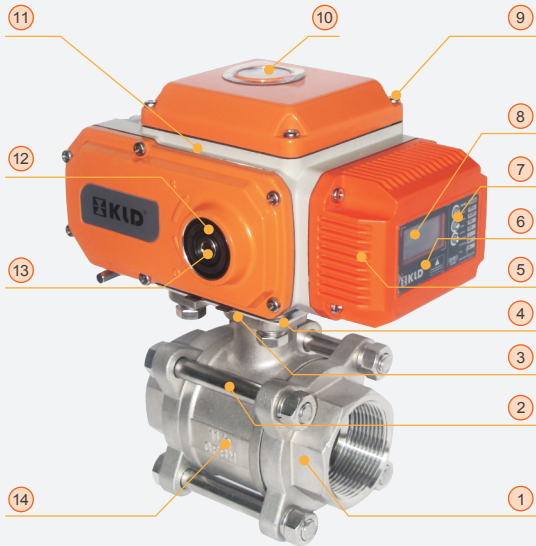


Connection Size (unit: mm)

DN	d	L1=L2			G1=G2=G3		D1=D2	L		H1	H2	H	F	W(Kg)
		Thread	Socket weld	Butt weld	Thread	Socket weld	Butt weld	Thread	Weld					
8	11.0	17	10	23	G1/4"	14.1	16.4	64	72	18.0	38.4	140.4	17.7	
10	12.5	17	10	23	G3/8"	17.6	18.6	64	72	18.0	38.4	140.4	20.9	
15	15.0	20	10	20	G1/2"	21.7	22.6	72	72	22.5	42.0	148.5	24.9	
20	20.0	20	13	23	G3/4"	27.1	28.8	80	80	22.5	48.0	154.5	30.0	
25	25.0	20	13	24	G1"	33.9	34.8	85	85	30.0	55.0	169.0	38.1	

BSPT, NPT and RC, etc is optional. Please specify in orders.

500C Smart Three Piece Ball Valve Main Components Diagram

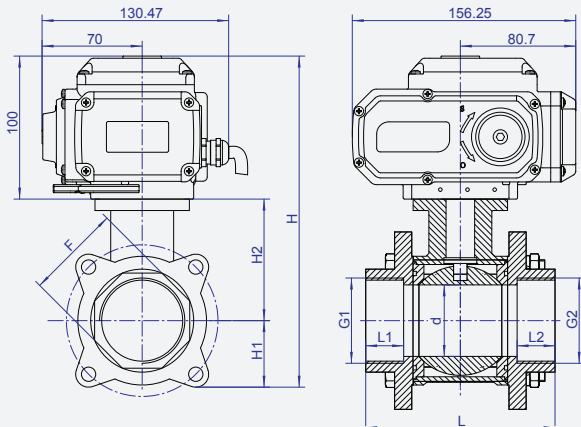


Main Components

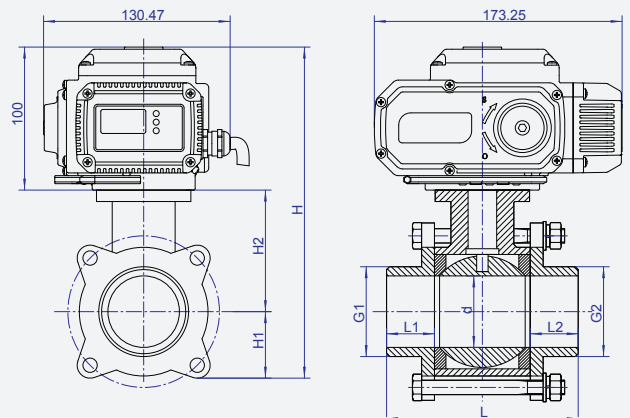
NO.	Parts	Material	Qty
1	Valve bonnet	304/316	2
2	Bolt	304	4
3	Wrench fixed	304	1
4	Hexagon wrench	Tool steel	1
5	Terminal block	Heatproof ABS	1
6	Label	PVC	1
7	Key	Rubber	3
8	Screen	OLED	1
9	Screws	304	17
10	Indicator	Tempered glass	1
11	Actuator	Casting aluminum	1
12	Oil seal	NBR	1
13	Manual shaft	304	1
14	Valve body	304/316	1

Normal on/off model no key and 1.3-inch OLED screen.

Dimension 【500N, DN32-DN50, Thread/Socket weld】



Dimension 【500C, DN32-DN50, Butt weld】



Connection Size (unit: mm)

DN	d	L1=L2			G1=G2=G3			D1=D2	L	H1	H2	H	F	W(Kg)
		Thread	Socket weld	Butt weld	Thread	Socket weld	Butt weld							
32	32	25.0	13	26.5	G1-1/4"	42.6	44.2	105	36.5	60	196.5	51.7		
40	38	23.5	13	29.5	G1-1/2"	48.7	50.8	113	40.0	70	210.0	55.4		
50	50	26.5	16	33.5	G2"	61.1	62.8	132	46.5	85	231.5	66.5		

BSPT, NPT and RC, etc is optional. Please specify in orders.

1000C Smart Three Piece Ball Valve Main Components Diagram

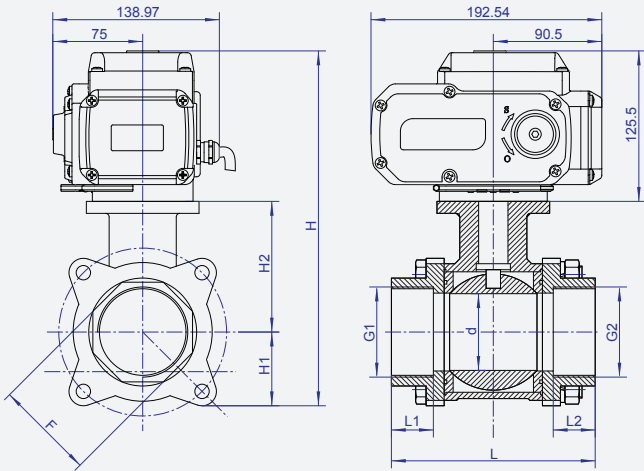


Main Components

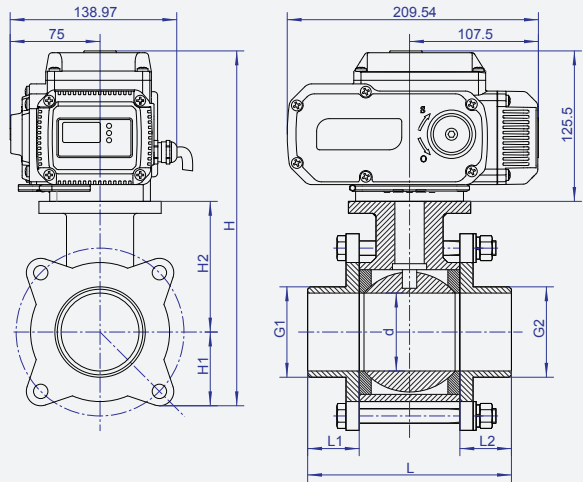
NO.	Parts	Material	Qty
1	Valve bonnet	304/316	2
2	Bolt	304	4
3	Wrench fixed	304	1
4	Hexagon wrench	Tool steel	1
5	Terminal block	Heatproof ABS	1
6	Label	PVC	1
7	Key	Rubber	3
8	Screen	OLED	1
9	Screws	304	17
10	Indicator	Tempered glass	1
11	Actuator	Casting aluminum	1
12	Oil seal	NBR	1
13	Manual shaft	304	1
14	Valve body	304/316	1

Normal on/off model no key and 1.3-inch OLED screen.

Dimension 【1000N, DN65-DN100, Thread/Socket weld】



Dimension 【1000C, DN65-DN100, Butt weld】



Connection Size (unit: mm)

DN	d	L1=L2			G1=G2=G3		D1=D2	L	H1	H2	H	F	W(Kg)
		Thread	Socket weld	Butt weld	Thread	Socket weld	Butt weld						
65	65	35	16	43	G2-1/2"	77.0	75.4	170	61.5	109	296.0	83.1	
80	76	35	16	43	G3"	89.8	94.0	186	69.0	118	312.5	97.0	
100	94	40	19	45	G4"	115.5	114.0	220	110.0	133	368.5	129.3	


BSPT, NPT and RC, etc is optional. Please specify in orders.

Electrical Parameters

Series type	Rated torque @rated voltage	Rated voltage	Available voltage range	Run/static power consumption @rated voltage	Peak cruent @rated volatage @5ms	External fuse specification	Running time ^{*1} (Per 90°)	Optional control mode
KLD-200N	15N.m	DC24V	DC22V-28V	36W/0.25W	1.5A	3A	10S@Power up 15S@Power down	KT32 or KT32S
		AC110V	AC90V-130V	40W/1.6W	90mA	1A		
		AC230V	AC190-250V	40W/1.6W	90mA	1A		
	20N.m	DC12V	DC10-14V	3.5W/0.3W	1A	2A	10S	B3 BD3 B3S BD3S
		DC24V	DC22V-28V	15W/0.1W	1.2A	2A		
		AC24V	AC18V-26V		0.5A	2A		
AC110V	AC90V-130V	135mA	1A					
KLD-500N	50N.m	DC24V	DC22V-28V	60W/1.5W	2.5A	5A	10S	B3S BD3S
		AC24V	AC22V-28V	50W/1W	3A	5A	20S	
		AC110V	AC90V-130V		1A	2A		
		AC230V	AC190-250V		0.5A	2A		
KLD-1000N	100N.m	DC24V	DC22V-28V	60W/1W	3.5A	5A	10S	B3S BD3S
		AC24V	AC22V-28V	80W/1W	3.5A	5A	30S	
		AC110V	AC90V-130V		1.5A	3A		
		AC230V	AC190-250V		0.6A	2A		
KLD-2000N	200N.m	DC24V	DC22V-28V	180W/1W	4A	10A	10S	B3S BD3S
		AC110V	AC90V-130V	150W/1W	2A	5A	30S	
		AC230V	AC190-250V		1A	5A		
KLD-4000N	400N.m	DC24V	DC22V-28V	240W/1W	5A	10A	10S	B3S BD3S
		AC110V	AC90V-130V	200W/1W	2.5A	5A	30S	
		AC230V	AC190-250V		2A	5A		

※ Since the running time is affected by the valve body, it is considered to be qualified within ± 3s.

Function Parameters

The valve ball rotation Angel	90°
Protection grade	IP67 or F Type
Manual function	Standard (Manual override is only permitted to be used when power is cut)
Indicator	

Working Conditions

Ambient temperature	-20 ——60
Ambient humidity	Relative humidity≤85% ---- Suitable for IP67
	Relative humidity > 85% ---- Suitable for F Type
Medium temperature ¹	0-100
Medium pressure ²	≤4.0MPa

¹ It needs to use high-temperature bracket if working medium temperature is between 100 to 120 .
² Diameter is less than DN32 can reach 6.4 MPa.